
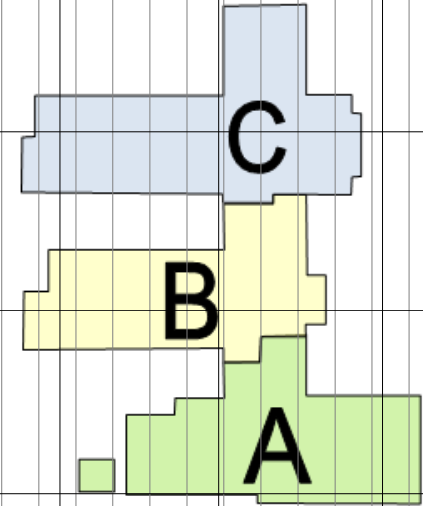


ACT ID	DESCRIPTION	ORIG DUR	REM DUR	PRED	SUCC	RESP	2012																														
							JAN			FEB			MAR			APR			MAY			JUN			JUL			AUG									
							02	09	16	23	30	06	13	20	27	05	12	19	26	02	09	16	23	30	07	14	21	28	04	11	18	25	02	09	16	23	30
<b>WYATT</b>																																					
<b>AREA B</b>																																					
B1520	ROOF BLOCKING	3	3	B1510	B1530	GCW	02JAN12																														
																																					
<b>ALABAMA CONTRACT SALES</b>																																					
<b>AREA A</b>																																					
A1654	BASKETBALL GOALS	3	3	A1640, A1650	A1992	ACS																															
<b>APCO</b>																																					
<b>SITE</b>																																					
1584	SET APCO TRANSFORMER	1	1	1582, A1560	1586, 1800,	APCO																															
1586	APCO PULL PRIMARY WIRING	3	3	1584	1988	APCO																															
<b>APEX</b>																																					
<b>AREA A</b>																																					
A1562	SET RTU'S	5	5	A1532, A1542	A1570, A1640	APEX																															
A1600	OH DUCT ROUGH IN	33	6	A1460	A1620	APEX																															
<b>AREA B</b>																																					
B1360	SET & CONNECT CONDENSING UNITS	3	3	B1350	B1750	APEX																															
B1596	OH DUCT ABOVE FIRE CEILING	5	5	B1460	B1597, B1598	APEX																															
B1600	OH DUCT ROUGH IN	5	5	B1400, B1430,	B1610	APEX																															
<b>AREA C</b>																																					
C1582	OH DUCT ROUGH IN ABOVE FIRE CEILING	5	5	C1460	C1584	APEX																															
<b>BAIRD</b>																																					
<b>SITE</b>																																					
1720	8" BACKFLOW VAULT	2	2	1596, 1710	1750	BAIRD																															
1750	3" BACKFLOW	1	1	1720, 1740	1760	BAIRD																															
1760	WATER TESTING	3	3	1750		BAIRD																															

**SCHEDULE OF REMAINING WORK**



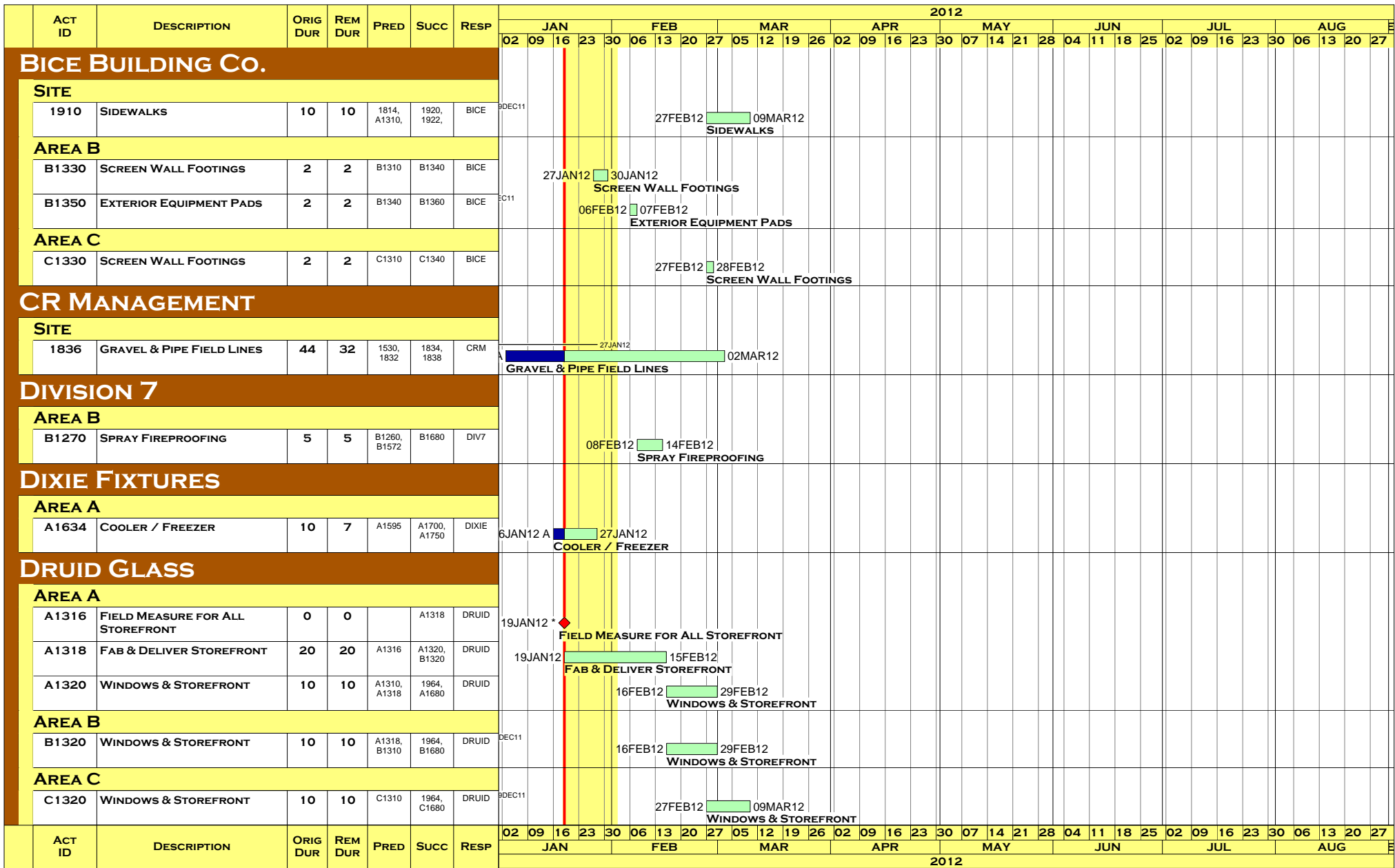
- Early bar
- Target bar
- Progress bar
- Critical bar
- ◆ Start milestone point
- ◆ Finish milestone point

CONCORD (SURETRAK)  
 REPORT: CEL4  
 LAYOUT: NEAR TERM BY RESP  
 FILTER: NEAR TERM BY RESP

**CONCORD ELEMENTARY**  
**GARY C. WYATT, INC.**

RUN DATE: 19JAN12  
 DATA DATE: 19JAN12  
 JOB# 1110  
 PAGE 1A OF 7A





- Early bar
- Target bar
- Progress bar
- Critical bar
- Start milestone point
- Finish milestone point

CONCORD (SURETRAK)  
 REPORT: CEL4  
 LAYOUT: NEAR TERM BY RESP  
 FILTER: NEAR TERM BY RESP

## CONCORD ELEMENTARY

### GARY C. WYATT, INC.

RUN DATE: 19JAN12  
 DATA DATE: 19JAN12  
 JOB# 1110  
 PAGE 2A OF 7A



ACT ID	DESCRIPTION	ORIG DUR	REM DUR	PRED	SUCC	RESP	2012																															
							JAN				FEB				MAR				APR				MAY				JUN				JUL				AUG			
							02	09	16	23	30	06	13	20	27	05	12	19	26	02	09	16	23	30	07	14	21	28	04	11	18	25	02	09	16	23	30	06
<b>E&amp;E</b>																																						
<b>AREA A</b>																																						
A1682	METAL STUD FRAMING	3	3	A1680	A1684	E&E	01MAR12 05MAR12 METAL STUD FRAMING																															
<b>GREEN BUILDING Co.</b>																																						
<b>AREA B</b>																																						
B1430	METAL TRUSSES	34	7	B1400, B1410	B1440, B1460,	GREEN	27JAN12																															
B1460	ROOF DECK	11	7	B1260, B1430	B1462, B1470,	GREEN	27JAN12																															
<b>AREA C</b>																																						
C1430	METAL TRUSSES	26	12	B1460, C1400,	C1460, C1468,	GREEN	03FEB12																															
C1460	ROOF DECK	3	3	C1260, C1430	C1462, C1464,	GREEN	06FEB12 08FEB12 ROOF DECK																															
<b>GRIFFIN ELECTRIC</b>																																						
<b>SITE</b>																																						
1800	TRANSFORMER POWER FEED	5	5	1584, 1766	1814	GRIFFIN	01FEB12 07FEB12 TRANSFORMER POWER FEED																															
1814	SET POLES/SECURITY CAMERAS	3	3	1800, 1810,	1910	GRIFFIN	08FEB12 10FEB12 SET POLES/SECURITY CAMERAS																															
1986	PULL SERVICE ENTRANCE	5	5	1584, C1500	1988	GRIFFIN	04JAN12 28FEB12 05MAR12 PULL SERVICE ENTRANCE																															
<b>AREA A</b>																																						
A1228	PULL TELEDATA BACKBONE/HORIZONTAL	10	9	A1200, A1226,	A1740	GRIFFIN	08FEB12 20FEB12 PULL TELEDATA BACKBONE/HORIZONTAL																															
A1495	PULL/TERMINATE DISTRIBUTION OH	5	5	A1552, A1576	A1559, A1570	GRIFFIN	09JAN12 13JAN12 29FEB12 06MAR12 PULL/TERMINATE DISTRIBUTION OH																															
A1534	PULL BRANCH/MC/SYSTEMS WIRING	20	17	A1532	A1552, A1554	GRIFFIN	06JAN12 A 10FEB12 PULL BRANCH/MC/SYSTEMS WIRING																															
A1574	DISTRIBUTION ELECTRIC ROOM EQUIPMENT	23	9	A1560	A1576, C1540	GRIFFIN	06JAN12 A 31JAN12 DISTRIBUTION ELECTRIC ROOM EQUIPMENT																															
A1576	PULL/TERMINATE DISTRIBUTION UG	20	20	A1120, A1574	A1495	GRIFFIN	06JAN12 01FEB12 28FEB12 PULL/TERMINATE DISTRIBUTION UG																															
A1630	OH ELECTRICAL ROUGH IN	17	6		A1640, A1650,	GRIFFIN	06JAN12 A 26JAN12 OH ELECTRICAL ROUGH IN																															
A1650	GYM LIGHTS	5	2	A1630	A1640, A1654,	GRIFFIN	06JAN12 A 20JAN12 GYM LIGHTS																															
A1652	FIXTURES AT DRYWALL RESTROOMS	5	5	A1640	A1684	GRIFFIN	08FEB12 14FEB12 FIXTURES AT DRYWALL RESTROOMS																															
A1660	GYM OH POWER CONNECTIONS/SPEAKERS	5	5	A1640, A1650	A1690	GRIFFIN	08FEB12 14FEB12 GYM OH POWER CONNECTIONS/SPEAKERS																															
A1670	GYM DEVICES COVERS	5	5	A1650	A1640, A1690	GRIFFIN	C11 23JAN12 27JAN12 GYM DEVICES COVERS																															
A1690	GYM SOUND SYSTEM STARTUP/COMMISSION	3	3	A1660, A1670	A1740	GRIFFIN	DDEC11 15FEB12 17FEB12 GYM SOUND SYSTEM STARTUP/COMMISSION																															

- Early bar
- Target bar
- Progress bar
- Critical bar
- Start milestone point
- Finish milestone point

CONCORD (SURETRAK)  
 REPORT: CEL4  
 LAYOUT: NEAR TERM BY RESP  
 FILTER: NEAR TERM BY RESP

## CONCORD ELEMENTARY

### GARY C. WYATT, INC.

RUN DATE: 19JAN12  
 DATA DATE: 19JAN12  
 JOB# 1110  
 PAGE 3A OF 7A









